



2022 Impact Report

GROWING TOGETHER

Dear Friend,

We've created this report for our donors so you can see the impact of your generosity. We are deeply grateful for your contributions and support of Whole Family Health Center and The Pierone Research Institute. Your generous giving is helping us to make a significant impact on the health and wellbeing of our community, and we are truly grateful for your support.

Thanks to your contribution, we are able to continue providing essential primary care services to those who need it most. Your gift is helping us provide critical health care services to underserved populations, including low-income families, the elderly, and those who are uninsured or underinsured.

Your support is also helping us to expand our reach and impact, by allowing us to develop new programs and services that meet the changing needs of our community. Whether it's providing health education and outreach, offering preventive screenings and check-ups, or developing innovative approaches to delivering care, your contribution is making it all possible.

But the impact of your gift goes beyond just the services we provide. Your support is also helping us to build a stronger, healthier community overall. By investing in primary care, research, and preventive health, we are helping to create a more resilient community that is better equipped to face the challenges ahead.

Once again, we want to express our heartfelt thanks for your support. Your contribution is truly making a difference, and we could not do what we do without your generosity. We hope that you will continue to partner with us as we work to improve the health and wellbeing of our community, and we look forward to keeping you updated on the impact of your gift in the coming months and years.

Sincerely,

A handwritten signature in black ink that reads "Gerald Pierone Jr.".

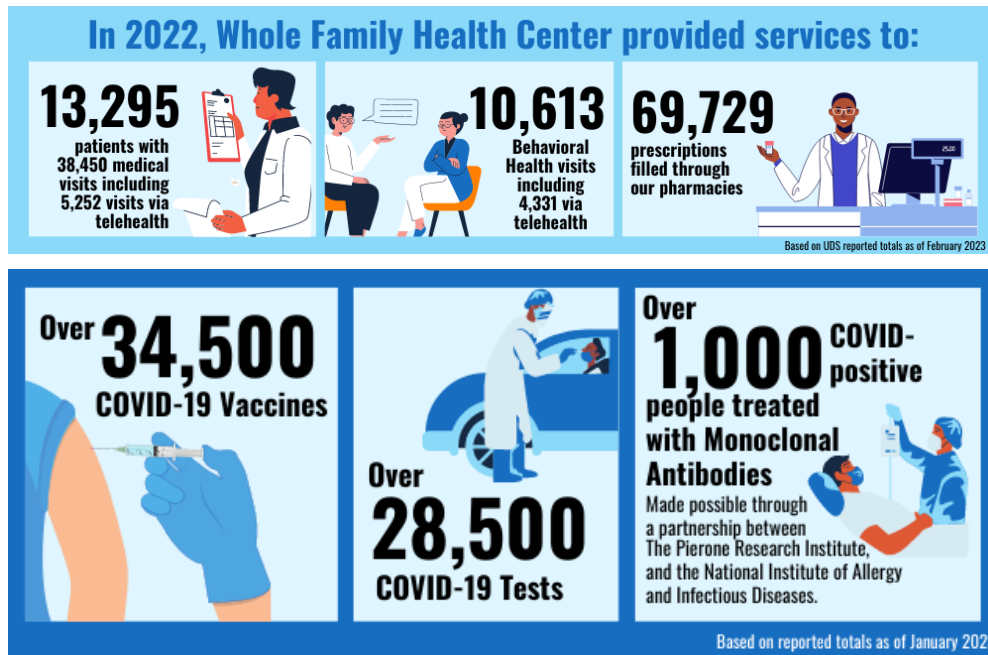
Dr. Gerald Pierone, Jr.
Founder, Chief Medical Officer

A handwritten signature in black ink that reads "Marie Andress".

Marie Andress, MBA, CTP
Chief Executive Officer



Because of YOU...



Whole Family Health Center (WFHC) has been the gold-standard for COVID-19 testing, treatment, and vaccines on the Treasure Coast. We continue our ongoing efforts to vaccinate our community and ensure that we are offering the most effective treatments as variants evolve. We are also diligently monitoring the effects of long-COVID. This lifesaving work would not have been possible without your support.

GlobeChek

In March 2022, WFHC started a pilot program performing eye screening exams. By utilizing the GlobeChek state of the art technology to detect glaucoma, diabetic retinopathy, macular degeneration, and cataracts (the four leading causes of blindness in the U.S.), more than 1500 residents received exams. About 1% of these individuals were referred for urgent surgery to prevent blindness and many others were referred for semi-urgent treatment. Others were fitted with eyeglasses that improved their sight tremendously, making a huge impact on their quality of life.



YOUR Support Matters

Clinical Pharmacists

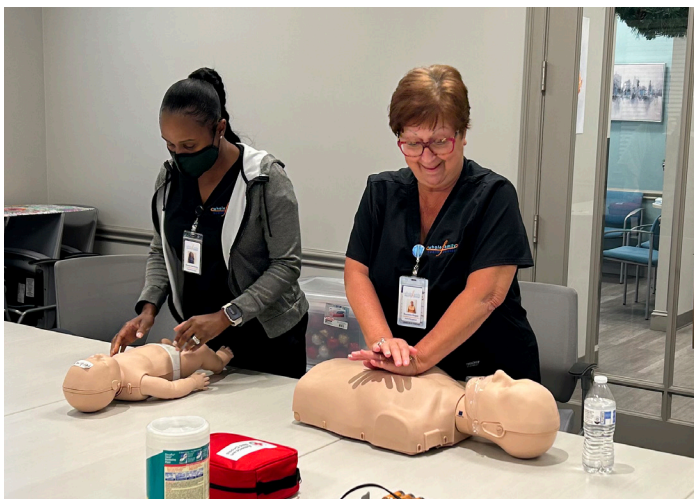
Recently, WFHC added a Clinical Pharmacist to our team of medical professionals. Julie Valdes, PharmD, CDCES, CCTS, is multilingual and has extensive specialty pharmacist experience in comprehensive medication reviews, diabetes care management, nutritional counseling and inhaler and injection education.

Individuals with multiple comorbidities and chronic diseases may take a dozen or more pills a day, some prescribed by their primary care provider and some by their specialists. Regardless of who prescribes their medications or if they're filled at our affordable and convenient Whole Family Health Center pharmacy or elsewhere, our Clinical Pharmacist will provide a "brown bag review" of patients' medicines and supplements. This comprehensive review provides patients with a complete understanding of their medications and can make all the difference in managing their conditions and improving their quality of life.

YOU Are Helping Us Save Lives

Whole Family Health Center's mission is to remove barriers to accessing high-quality, caring healthcare services so everyone, regardless of their ability to pay, can have longer and healthier lives. Donors like you make this possible.

As a non-profit community healthcare organization serving the Treasure Coast for over 25 years, Whole Family Health Center offers an integrated approach to healthcare providing access to Adult & Pediatric Primary Care, Behavioral Health, and a pharmacy with delivery services, all under one roof.



COMMUNITY HEALTH QUALITY RECOGNITION ACHIEVEMENTS



2022 BADGES

"Whole Family Health Center has some of the best providers that you could ask for. They take their time to answer your questions and go the extra mile to make sure that you were comfortable with everything that you need to know. Thank you, thank you for your service."

-Behavioral Health Patient – May 2022

"Here we feel like part of a community, not just a patient. I fully trust that they always have my kids' best interest in mind. And my kids adore the staff!"

-Pediatric Patient Parent – August 2022

"My provider for this recent visit was amazing. She educated me very well on why I came in and gave me tips for what I can do to improve my health. She was great. I was stunned because most providers do not take the time to provide education, which is amazing because you feel like there is hope for what you are going through. The staff was friendly and I would highly recommend Whole Family Health Center for women's health!"

-Adult Primary Care Patient – February 2022

We Need YOU

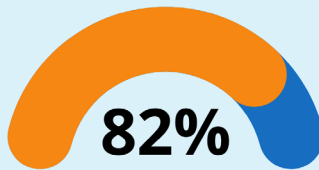
According to the Department of Health and Human Services, people in the U.S. have poorer health—more sickness and shorter lives—than people in other wealthy countries. U.S. workers are sicker and more likely to die earlier than workers in other wealthy countries. Americans pay too much for healthcare and lack adequate access to healthcare.

People with limited income are at an even greater risk for mental illness, chronic disease, and lower life expectancy. Children living in poverty are at a higher risk of developmental delays, toxic stress, chronic illness, and nutritional deficits, while adults are at a higher risk of adverse health effects from obesity, smoking, substance use, and chronic stress. Older adults with lower incomes experience higher rates of disability and mortality.

We are certainly not immune to the heavy health disadvantages here on Florida's Treasure Coast. For patients served by Whole Family Health Center with known income, 82% are below 200% of the federal poverty guidelines and at risk for poor health outcomes.

The majority of our patients rely on government funded insurance and/or our sliding fee discount plan

82% of WFHC patients with known income are below 200% of the Federal Poverty Guidelines



BASED ON 2022 UDS REPORTED TOTALS



THANK YOU

wholefamily
health center

YOU make it possible for us to provide integrated compassionate, affordable, quality health care for patients in the communities we serve.

If you would like to continue your support with a gift today, please use the QR code below or visit our donation page.



www.wfhcfl.org/donate-now